

## **Traveling Exhibits**

- Traveling exhibit space requirements vary with each topic and can be adjusted for your available space.
- A secure case or wall display is required for most exhibits.
- Exhibits may visit your site for one to three months, depending on other obligations, for a set-up fee of \$50.
- A travel charge will be added for sites outside of Harvey County.

### **Topics**

- Harvey County on the Homefront: Local Life During World War I
- Fill 'Er Up! Gas Stations of Harvey County
- Trains, Depots and the Harvey House (scrolling slide show, about 20 minutes in length)
- Up the Beaten Path: The Chisholm Trail In Kansas
- Stroll Through the 1960s
- Aprons: Tied with Love
- Road-Making: The Construction of the Meridian Highway
- An Accomplished Young Lady
- Our Hats are Off
- Piece by Piece: Quilts from Our Collection
- Best-dressed Dolls: Doll Hats & Clothing
- Makin' A Splash: Story of the Newton Municipal Pool

### **Affordable, entertaining and educational programs and exhibits for :**

- Schools
- Libraries
- Retirement communities
- Civic organizations
- Church groups
- Family reunions
- Class reunions
- Service organizations
- Social clubs
- Annual meetings
- And more!

### **To schedule a program or exhibit:**

Harvey County Historical  
Museum & Archives  
P.O. Box 4  
Newton, KS 67114

(316) 283-2221  
info@hchm.org

## **Harvey County Historical Museum & Archives**

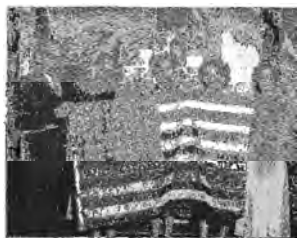


## **2016 Speakers Bureau Programs and Traveling Exhibits**

## Programs

- All programs require a table, slide screen, and sound system if speaking to a large group (except *Common to Downright Strange*, which does not require a slide screen).
- We provide the Powerpoint equipment unless other arrangements are made.
- The program fee is \$50.
- A travel charge will be added for sites outside of Harvey County.
- Programs are also available at the museum, with tables and chairs for your meeting.

Newton's Bloody Sunday: The Gunfight at Hide Park—Perhaps no Harvey County legend gets as much attention as the events surrounding the evening of Aug. 19-20, 1871. Known as "Newton's General Massacre", the event established Newton's reputation as "the wickedest town in the West". This program examines the facts, the legends, the myths and some of the unanswered questions that remain to this day.



Celebrating Our Flag in Pictures Through the Decades. Join photo curator John Whitlock as he shares about the history of Flag Day and highlights through

historic photos the versions of the American flag that have been created since Harvey County was founded.

### Up the Beaten Path: Following the Chisholm Trail—

An estimated 700,000 Texas longhorns were driven from Texas



to shipping points in Kansas in 1871 alone. Hear first-hand accounts of trail drivers and cowboys who were involved in "the greatest migration of animals ever known" that included soaking downpours, frustrations with other cowboys and stubborn cattle. Related exhibit available.

Common to Downright Strange: Object from History—Examine assorted items from the near and far past and hear the stories that go along with them. This presentation is suitable for large or small groups and is highly interactive with hands-on exploration of objects and conversation between presenter and audience.



A Moment of Fame: Newton's Puckett Sisters—Seeking fame, fortune and fun, Adelaide and Eleanor Puckett left Newton for the opportunities of New York City, changing their name to "Ambrose" along the way. Addie was a publisher, Eleanor an international dance star, but both returned to Newton. Hear about their fascinating journey around the world and back home.

'Wish You Were Here:' Postcards from Harvey County and Beyond— Get a taste of the rich history of the postcards that document the county and state.

An Accomplished Young Lady: The author of an 1890's article advised "If you have daughters, teach them all needlework . . . Dress modestly, but not fine, unless the world knows you can afford it." Young ladies and their mothers faithfully followed this advice and the results are evident in popular activities and hand crafts of young ladies from the 1880s through today. Related exhibit available.

Harvey County's Foulest Crime and Greatest Legal Battle—What do you get when you start with an 1893 arson in the office of the Harvey County Register of Deeds, add an individual who then just happens to possess the only complete set of deeds for Harvey County, and multiply by several attorneys, law enforcement officers, newspaper publishers and other interesting characters? A fascinating story of crime and corruption.

Good Roads: From Cowpaths to Interstates—Explore the "good road movement" that bicycle enthusiasts began in the late 1800s and how the movement led to the development of the modern interstate system. Related exhibit available.

The Latest in Home Entertainment: Enjoying Music in Harvey County— A musical journey exploring how our forms of listening to and making music have changed over the years. From the breakthrough roller organ to Spotify, music has always been an important part of our lives. On-site program includes objects and demonstrations.